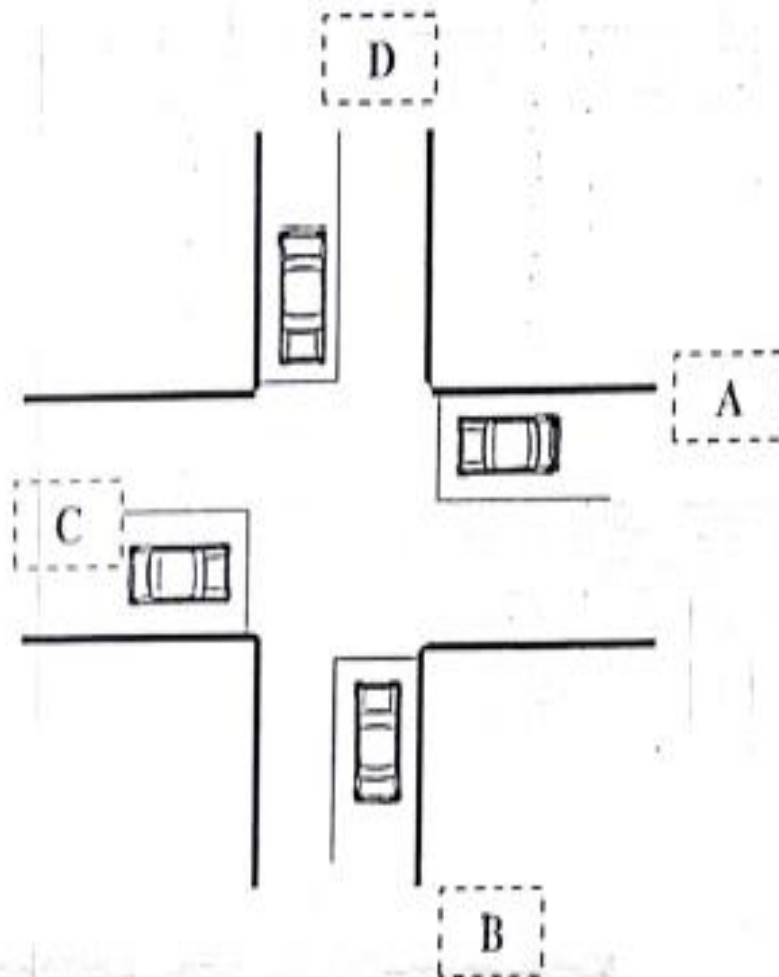
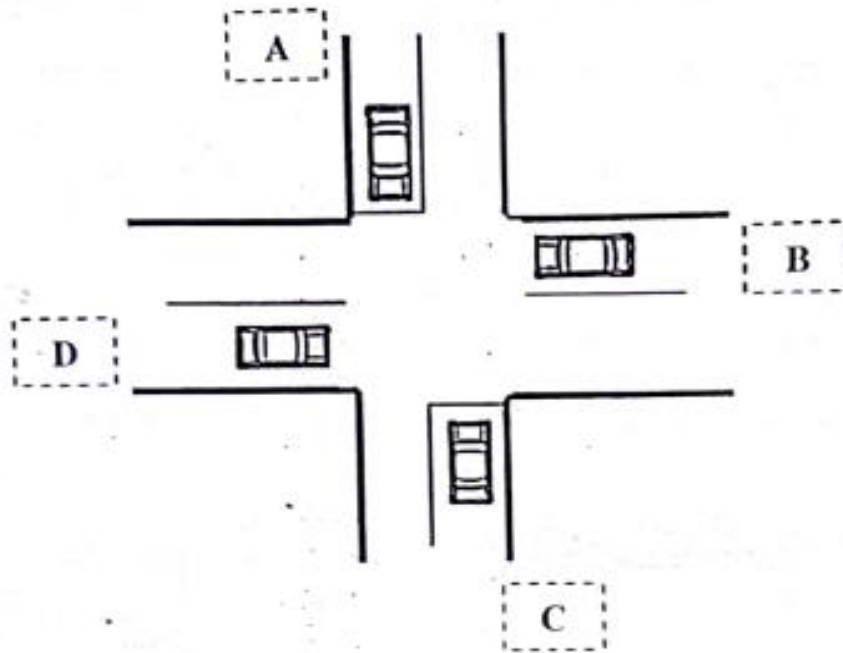


1. Discuss the following briefly:
  - a- The difference between two way stop control and all-way stop control.
  - b- The advantages and disadvantages of traffic signals as control devices.
  
2. The following intersection is controlled by four-way stop signs. Vehicles D and C arrived to the stop lines at the same time followed by vehicles B and A (i.e. vehicles A and B arrived at the same time). Suggest a movement order for the four vehicles at the intersection (i.e. which vehicle should proceed through the intersection first? Second, etc.).



3. The following intersection is controlled by two-way stop signs. Vehicles A and B arrived to the intersection at the same time followed by vehicle C. If Vehicle D is expected to arrive about 10 seconds after the arrival of vehicle C. Vehicle B will be turning left while vehicle A is going through. Suggest a movement order for the four vehicles at the intersection (i.e. which vehicle should proceed through the intersection first? Second, etc.) for the following cases:



4. The following intersection is controlled by two-way stop signs. Vehicles D arrived to the intersection followed by vehicle C and A at the same time. Finally vehicle B is expected to arrive about 3 sec after the arrival of vehicles C and A. Suggest a movement order for the four vehicles at the intersection (i.e. which vehicle should proceed through the intersection first? Second, etc.?)

